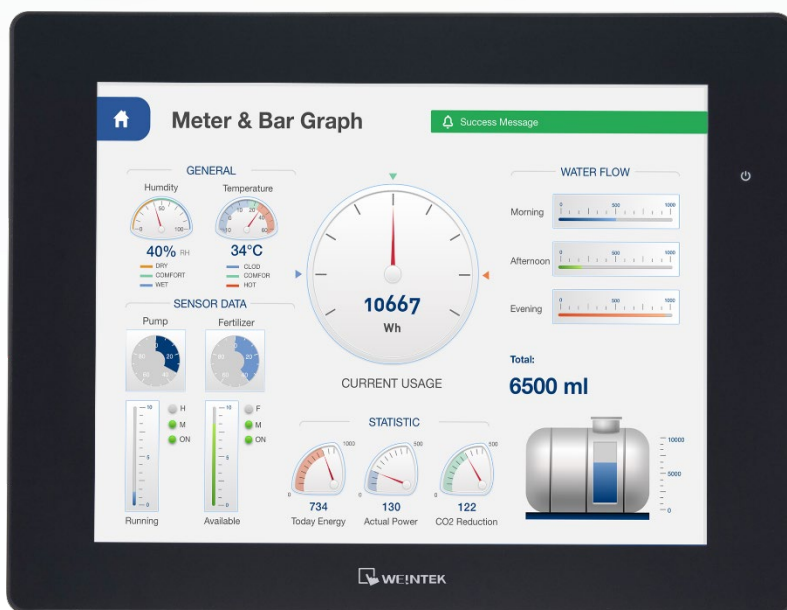


# cMT2128X

12.1" WVA Standard HMI



IP66 NEMA4

## Key Features

- ▶ 12.1" 1024 × 768 LCD
- ▶ Resistive touch panel
- ▶ COM port × 3, Ethernet port × 2, USB host port × 1, microSD slot × 1
- ▶ Built-in 4 GB FLASH and 1 GB RAM
- ▶ Fan-less cooling system

# Technical Specifications

## Display

Display	12.1" Wide Viewing Angle (WVA)
Resolution	1024 × 768
Brightness (cd/m <sup>2</sup> )	600
Contrast Ratio	1000:1
Backlight Life Time	> 30,000 hrs.
Colors	16.7 M
LCD Viewing Angle (T/B/L/R)	89/89/89/89
Pixel Pitch (mm)	0.240 (H) × 0.240 (V)

## Touch Panel

Type	4-wire Resistive Type
Accuracy	Active Area Length (X) ± 2 %, Width (Y) ± 2 %

## Memory

FLASH	4 GB
RAM	1 GB

## Processor

CPU	Quad-core RISC
-----	----------------

## I/O Port

Memory Card Type	microSD × 1
USB Host	USB 2.0 × 1
Ethernet	LAN 1: 10/100/1000 Base-T × 1 LAN 2: 10/100 Base-T × 1
COM Port	Con.A: COM2 RS-485 2W/4W, COM3 RS-485 2W Con.B: COM1 RS-232 4W, COM3 RS-232 2W*
WiFi	N/A
RS-485 Dual Isolation	Yes
CAN Bus	N/A
Audio Output	N/A

\* Only Tx & Rx (no RTS/CTS) may be used for COM1 RS-232 when COM3 RS-232 is also used.

## Power

Input Power	24 ± 20 % VDC
Power Isolation	Built-in
Power Consumption	1.2 A @ 24 VDC
Voltage Resistance	500 VAC (1 min.)
Isolation Resistance	Exceed 50 MΩ at 500 VDC

## Mechanical

Enclosure	Plastic
Dimensions W×H×D	317 × 243 × 41 mm
Panel Cutout	305 × 231 mm

Weight	Approx. 1.7 kg
Mount	Panel Mount, VESA Mount 75 × 75 mm

## Environment

PCB Coating	Yes
Protection Structure	UL Type 4X (indoor use only) / NEMA4 / IP66 Compliant Front Panel
Storage Temperature	-20° ~ 60°C (-4° ~ 140°F)
Operating Temperature	0° ~ 55°C (32° ~ 131°F)
Relative Humidity	10 % ~ 90 % (non-condensing)
Altitude	3,000 m
Vibration Endurance	10 to 25 Hz (X, Y, Z direction 2G 30 minutes)

## Certificate

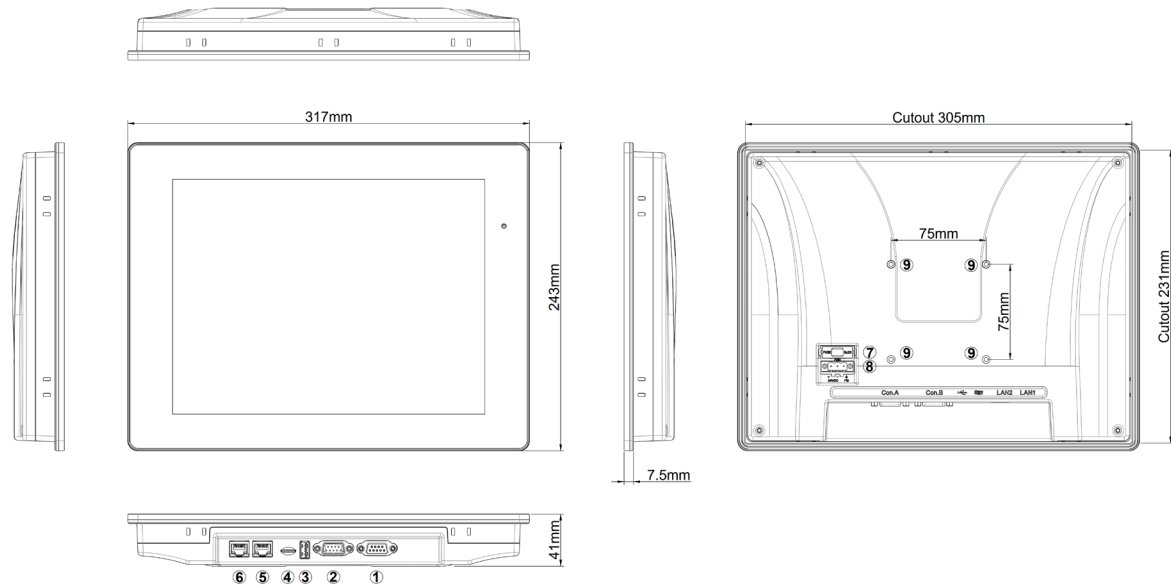
CE	CE Marked
UL	cULus Listed

## Software

EasyBuilder Pro	V6.08.01 or later versions
Weincloud	EasyAccess 2.0 (Optional), Dashboard (Optional)
CODESYS®	Optional

\* CODESYS® is a trademark of CODESYS GmbH.

# Dimensions



<b>1</b>	Con.A: COM2 RS-485 2W/4W, COM3 RS-485 2W	<b>6</b>	LAN 1
<b>2</b>	Con.B: COM1 RS-232 4W, COM3 RS-232 2W	<b>7</b>	Fuse
<b>3</b>	USB Host	<b>8</b>	Power Connector
<b>4</b>	microSD Card Slot	<b>9</b>	VESA 75 mm Screw Holes
<b>5</b>	LAN 2		

# Pin Assignment

Con.B: 9 Pin, D-sub, Male

PIN#	COM1 [RS232]4W	COM3 [RS232]2W
1		
2	RxD	
3	TxD	
4		
5	GND	
6		
7	RTS	TxD
8	CTS	RxD
9	GND	

Con.A: 9 Pin, D-sub, Female

PIN#	COM2 [RS485]2W	COM2 [RS485]4W	COM3 [RS485]2W
1	Data-	Rx-	
2	Data+	Rx+	
3		Tx-	
4		Tx+	
5	GND		
6			Data-
7			
8			
9			Data+

# Part Number

---

**【cMT2128X】**

12.1" 1024 × 768 WVA LCD HMI, Built-in 4 GB FLASH / 1 GB RAM

## Optional:

**RP0081210:** 12.1" Screen Protective Film

**RZACEA020:** EasyAccess 2.0 Activation Card

**RZ0CDS000:** CODESYS License