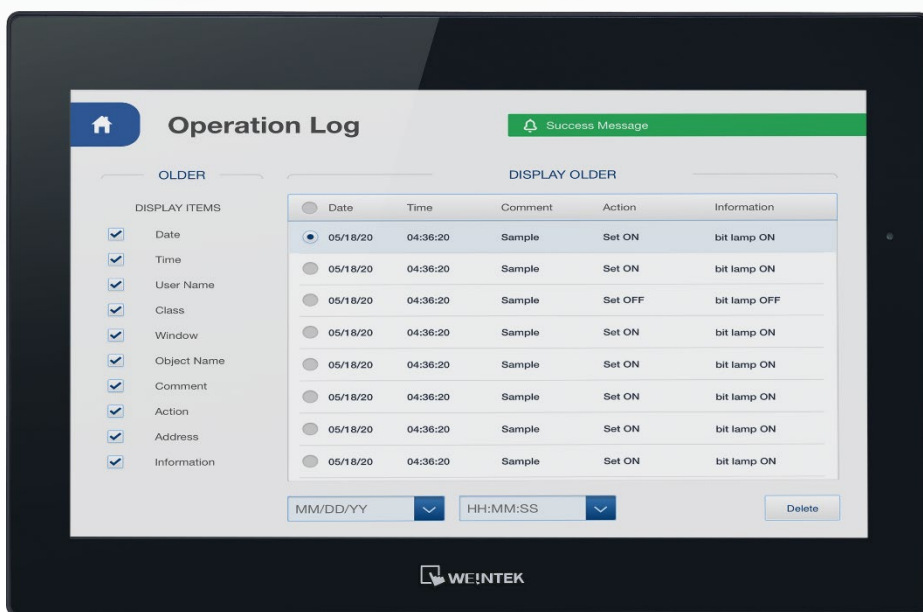


cMT2166X

15.6" WVA Standard HMI



CE  IP66 NEMA4

Key Features

- ▶ The oTP integrated touch solution offers an edge-to-edge design, high-resolution and high-transmittance
- ▶ 15.6" 1920 × 1080 LCD
- ▶ Tempered glass capacitive touch panel
- ▶ COM port × 2, Ethernet port × 1, USB host port × 1
- ▶ Built-in 4 GB FLASH and 1 GB RAM
- ▶ Fan-less cooling system

Technical Specifications

Display

Display	15.6" Wide Viewing Angle (WVA)
Resolution	1920 × 1080
Brightness (cd/m ²)	300
Contrast Ratio	800:1
Backlight Life Time	> 30,000 hrs.
Colors	16.2 M
LCD Viewing Angle (T/B/L/R)	89/89/89/89
Pixel Pitch (mm)	0.17925 (H) × 0.17925 (V)

Touch Panel

Type	Tempered Glass, Capacitive Type
Hardness Scale	7H

Memory

FLASH	4 GB
RAM	1 GB

Processor

CPU	Quad-core RISC
-----	----------------

I/O Port

Memory Card Type	N/A
USB Host	USB 2.0 × 1
Ethernet	10/100 Base-T × 1
COM Port	Con.A: COM1 RS-485 2W/4W, COM3 RS-485 2W Con.B: COM1 RS-232 4W, COM3 RS-232 2W*
WiFi	N/A
RS-485 Dual Isolation	N/A
CAN Bus	N/A
Audio Output	Built-in Mono Speaker

* Only Tx & Rx (no RTS/CTS) may be used for COM1 RS-232 when COM3 RS-232 is also used.

Power

Input Power	24 ± 20 % VDC
Power Isolation	Built-in
Power Consumption	900 mA @ 24 VDC
Voltage Resistance	500 VAC (1 min.)
Isolation Resistance	Exceed 50 MΩ at 500 VDC

Mechanical

Enclosure	Front Bezel: Plastic, Rear Enclosure: Aluminum
Dimensions W×H×D	400 × 263 × 27.6 mm
Panel Cutout	384 × 247 mm
Weight	Approx. 1.6 kg

Mount	Panel Mount, VESA Mount 100 × 100 mm
-------	--------------------------------------

Environment

PCB Coating	Yes
Protection Structure	NEMA4 / IP66 Compliant Front Panel
Storage Temperature	-20° ~ 60°C (-4° ~ 140°F)
Operating Temperature	0° ~ 50°C (32° ~ 122°F)
Relative Humidity	10 % ~ 90 % (non-condensing)
Altitude	3,000 m
Vibration Endurance	10 to 25 Hz (X, Y, Z direction 2G 30 minutes)

Certificate

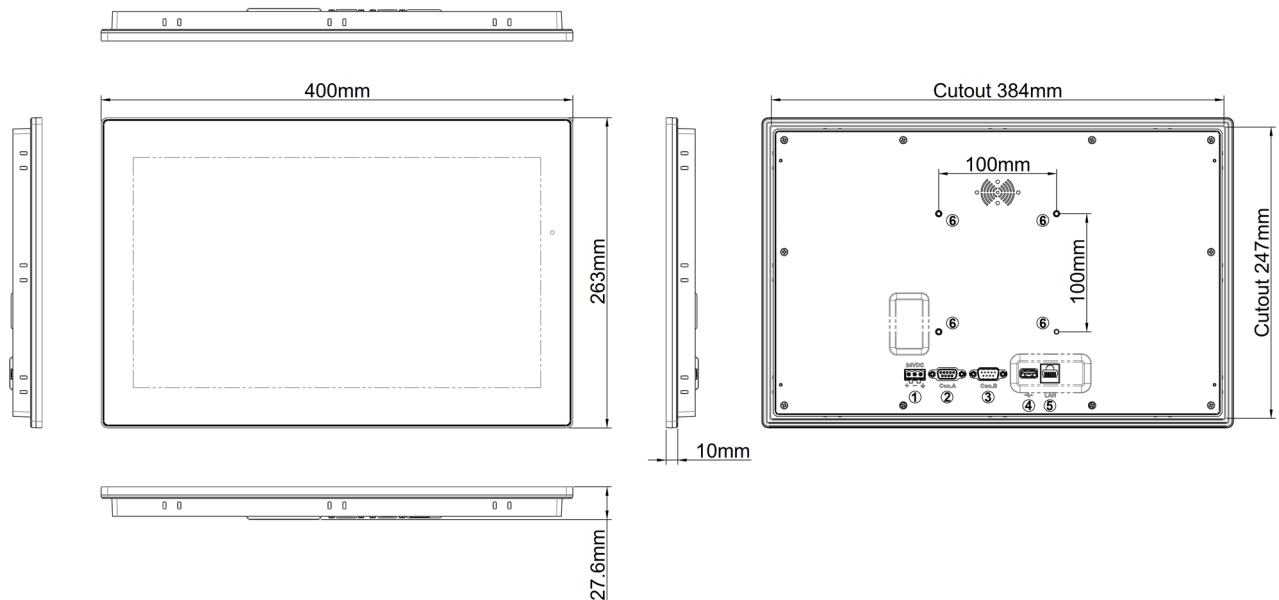
CE	CE Marked
----	-----------

Software

EasyBuilder Pro	V6.06.02 or later versions*
Weincloud	EasyAccess 2.0 (Optional), Dashboard (Optional)

* The minimum software requirement for MPI: EasyBuilder Pro V6.07.02

Dimensions



1	Power Connector
2	Con.A: COM1 RS-485 2W/4W, COM3 RS-485 2W
3	Con.B: COM1 RS-232 4W, COM3 RS-232 2W

4	USB Host
5	LAN
6	VESA 100 mm Screw Holes

Pin Assignment

Con.B: 9 Pin, D-sub, Male

PIN#	COM1 [RS232]4W	COM3 [RS232]2W
1		
2	RxD	
3	TxD	
4		
5	GND	
6		
7	RTS	TxD
8	CTS	RxD
9	GND	

Con.A: 9 Pin, D-sub, Female

PIN#	COM1 [RS485]2W	COM1 [RS485]4W	COM3 [RS485]2W
1	Data-	Rx-	
2	Data+	Rx+	
3		Tx-	
4		Tx+	
5	GND		
6			Data-
7			
8			
9			Data+

Part Number

【cMT2166X】

15.6" 1920 × 1080 WVA LCD HMI, Built-in 4 GB FLASH / 1 GB RAM

Optional:

RZACEA020: EasyAccess 2.0 Activation Card